



**Crete in Spring**  
**9th - 16th April 2026**

**Led by Sotiris Alexiou & Marinos Gogolos**



**Greenwings Wildlife Holidays**

Tel: 01473 254658

Web: [www.greenwings.co.uk](http://www.greenwings.co.uk)

Email: [enquiries@greenwings.co.uk](mailto:enquiries@greenwings.co.uk)

Linktree: <https://linktr.ee/greenwingstours>

## Crete in Spring

9 – 16 April 2026

Led by Sotiris Alexiou and Marinos Gogolos

### Day 1, 9 April.

Although there was no delay at our arrival, sadly there was still no time available for any field work today. Our beautiful hotel inside the old town of Chania was waiting for our arrival, under the calls of *Apus apus* Swifts and *Hirundo rustica* Swallows! Soon it was time for our first dinner, in a nice taverna in the Venetian harbour.

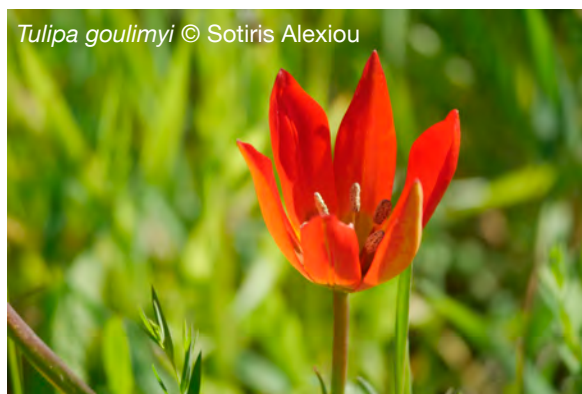
### Day 2, 10 April.

Contrary to the predictions of the last days, a glorious sun was shining today. So, we stuck to our itinerary: a visit to the White Mountains! After purchasing our lunch from a nice bakery with a lot of local flavours, we started ascending the mountain, enjoying a great view of the snowy peaks.

Spring wasn't truly advanced at the Omalos plateau yet, but still a few hundred *Tulipa bakeri* were in flower, with their three coloured flowers, mauve *Anemone coronaria* and the rare *Lamium purpureum*.

A little later, at the entrance of the famous Samaria Gorge, we saw *Aubrieta deltoidea* on the rocks and looked for any early flowering orchids, sadly in vain. We then moved to the opposite side of the plateau where several *Romulea bulbocodium* were flowering, alongside the bushes of *Berberis cretica* and *Crataegus monogyna*, plus *Parentucelia latifolia*, *Bellis perennis*, *Ranunculus paludosus* and a few *Gagea omalensis*, endemic to the plateau!

We enjoyed our lunch in the field, under the warm sun and headed slowly back down the mountain, as at sea level, Spring was more advanced. A nice leisurely walk, among flying *Zerynthia cretica* Cretan Festoon and *Lycaena phlaeas* Small Copper, proved very enjoyable. In the olive groves, we noted *Gladiolus italicus*, *Silene gallica*, *Ophrys phryganae*, *Orchis italica*, beautiful yellow bushes of *Calicotome villosa*, the oaks *Quercus coccifera* and *Q. pubescens*, both in flower, *Linum perenne*, *Linaria pelisseriana*, *Lavandula stoechas* with their amazing colour, the second, rarer species of Crown Daisy *Glebionis segetum*, *Euphorbia acanthothamnus*, *E. helioscopia* and *E. characias*, etc. But the goal of this visit was our second tulip for the day, the extremely rare in Crete, endemic *Tulipa goulimy*, with the beautiful red-orange colour! Several plants were flowering at the spot.



*Tulipa goulimy* © Sotiris Alexiou



*Tulipa bakeri* © Lyn R

Tonight, the taverna was situated in the narrow streets of the old town. The ceremony on Good Friday was taking place, with the λιτανεία (Litany), so some of us joined in.

### Day 3, 11 April.

After picking up lunch from the city of Chania, we moved west, along the north coast and reached a rocky shore, with some vertical rock faces at the back. We were amazed to see hanging from them large bushes of *Dianthus juniperinus*, in flower. *Arum concinatum* was there too, as were a lot of small common flowers, which we enjoyed as always.

Soon after, we reached the majestic Gorge of Topolia. Several *Gyps fulvus* Griffon Vultures were flying above us and even landed on their nests on the walls of the gorge, as well as *Falco tinnunculus* Kestrels and one *Falco peregrinus* Peregrine. *Columba livia* Rock Doves were flying as well as lots of *Ptyonoprogne rupestris* Crag Martins. A huge number of interesting plants were

here, the endemics *Centaurea argentea* (in bud), *Scutellaria sieberi* and *Verbascum arcturus*, the orchids *Orchis italica* and *Ophrys grammica*, but also the beautiful and more widespread plants such as *Convolvulus siculus*, *Campanula erinus*, *Euphorbia dendroides*, *Salvia pomifera*, *Papaver argemone* and the rare yellow form of *Ranunculus asiaticus*. Cretan Festoons were flying around us as we walked up the steps and reached the cave where the church of Agia Sofia is located. Plenty of *Podarcis cretensis* Cretan Wall Lizards were sunbathing on the steps.

After having our lunch in this amazing scenery, we moved a bit further south and visited a couple more locations. The main additions to our list were *Anacamptis laxiflora*, *Serapias lingua* and *S. bergonii*, *Ophrys phryganae*, a hypochromatic form of *Ophrys cretensis*, the endemic spiny bush *Chamaecytisus creticus*, *Alkanna sieberi* and *Anemone hortensis* subsp. *heldreichii*.



*Ranunculus asiaticus* © Lyn R

Chania was celebrating Easter, so lots of people were on the streets, parties were taking place, the atmosphere was celebrational – we had to blend in somehow. A visit to the local cathedral was mandatory after our dinner at the port, and Sotiris explained a few things about Orthodox Christianity and the decoration of the church. Some of us were enthusiastic or curious enough to ignore tiredness and participate in the ceremony of the Resurrection, which took place at 00:00.

#### Day 4, 12 April.



*Orobanche crenata*  
© Sotiris Alexiou

Easter Sunday today and the town was quiet. The beautiful, sunny days continued. We checked out of the hotel as today was our transfer day, when we would relocate to the south side of the island. But first, the Akrotiri peninsula was waiting for us! At our first stop, inside an olive grove, we had our first *Ophrys heldreichii*, along with the widespread *O. phryganae*. Three *Serapias* species were there in large numbers, *S. parviflora*, *S. bergonii* and *S. lingua*. Some beautiful huge *Orobanche crenata* were parasitising *Vicias*. *Gladiolus italicus*, *Tragopogon porrifolius*, *Geropogon hybridus*, *Tuberaria guttata* and many more species were spotted.

As we exited the olive grove, plenty of *Ophrys cretica* appeared, in all different patterns along with one *O. episcopalis*. We did enjoy *Tolpis barbata*, all three species of *Cistus*, and many more. A beautiful *Lactuca tuberosa* was spotted in flower next to our cars!

Our second stop would be in a small gorge, where we could just park the cars and walk along the peaceful road. *Ranunculus asiaticus* in its white variety was there, as well as *Dracunculus vulgaris* under huge *Ceratonia siliqua* Carob trees, in its full majesty! An amazing number of small interesting plants, like *Nepeta scorditis*, the tiny endemic *Allium circinnatum*, *Campanula erinus*, *Aurinia saxatilis*, *Umbilicus rupestris* and many more.

After enjoying our lunch, we took the long road to Plakias, our second base on this trip. Just before the entrance to this amazing seaside place, we entered the Gorge of Kotsifou, where a stop for chasmophytes was mandatory! Below the flying Vultures, plenty of endemics, like *Linum arboreum*, *Scorzonera cretica*, *Stachelina petiolata*, *Origanum dictamnus*, *Symphytum creticum* and *Cyclamen creticum* were hanging from the rocks, as well as *Acer sempervirens*, *Laurus nobilis*, *Quercus ilex* and many others.

#### Day 5, 13 April.

With excellent weather always as our ally, we dedicated this day to the area around Spili, famous for its orchids and more.

Not longer than half an hour later, we reached our destination. Immediately after we exited our cars, we saw *Neotinea lactea* and *N. tridentata*, *Orchis italica*, *O. anthropophora*, *O. pauciflora*, *Anacamptis boryi*, *Ophrys heldreichii*, *O. episcopalis*, *O. cretica*, *O. phryganae* and *O. bombyliflora* in huge numbers. The first of many *Tulipa doerfleri* were there at the verges of the fields. Soon after, as we walked towards a hill, the first *Orchis sitiaca* were added to our list of observations. Arriving at the hill, *Ophrys creberrima* appeared, as well as the first *O. dictynnae* and *Orchis quadripunctata*. Our friend Vinny, who joined the group independently, spotted a nice hybrid, *Orchis x pseudoanatolica*, next to the parent species, *Orchis quadripunctata* and *O. pauciflora*. Soon appeared *Ophrys lutea* and *Anacamptis collina*. Amazed by the numbers, we moved to a different position on this plateau. We enjoyed our lunch next to a field covered with *Anacamptis laxiflora* and tulips and then moved to find more on a nearby slope. Large numbers of the same orchids were there, but we saw our first *Ophrys ariadnae* and a few *Himantoglossum robertianum*.



*Ophrys heldreichii* © Ken R

The last stop on this huge plateau was dedicated to the one and only *Ophrys kedra*, with the large, narrow and dark lip. But soon, Frank yelled from a distance: a large number of *Tulipa saxatilis*, in a small rocky part of the fields, amazed us!



*Aethionema saxatile* © Colin S

It was time to head back to the hotel. We took the road that goes next to a huge vertical rock, in our need to change the habitats we visited. And it was worth it! Some nice plants were seen on the rocks: *Aethionema saxatile*, *Linum arboreum* and *Brassica cretica* were flowering. Frank spotted a big vanilla-scented bush, *Daphne sericea*, and we saw some *Asphodeline lutea* by the road. The Griffin Vultures never left our view in the sky, often in numbers reaching fifty!

Although the service was rather slow, we enjoyed a mainly fish-based meal on our sea front.

## Day 6, 14 April.

After all those days of full sunshine, today the sky was covered by a layer of clouds. Not too dark, but instead giving the opportunity for some great photos. Good - because we had a plan to see some nice plants!

Our first visit was to an open Oak forest, where a few hundred *Limodorum abortivum* lived, and quite a few were already in full anthesis! Alongside, we saw some *Anacamptis laxiflora*, *Neotinea lactea*, *Ophrys episcopalis*, *Muscari comosum* and *Gladiolus italicus*. Under the cistuses, a lot of *Cytinus ruber* were parasitising, and we even spotted a *Clathrus ruber* Red Cage Stinkhorn, having a deterrent odour and visited by flesh flies.

On our second stop, we visited a flowering slope next to a village. The number of orchids was astonishing! All species were in the thousands! *Anacamptis boryi*, *Orchis sitiaca* and *O. italica* were the main species of orchids. The numbers of the first two species were so great and their populations so dense, and at one point, we thought we had spotted an intergenetic hybrid between them! After careful examination, it was later discovered that this wasn't the case; it was just an extreme of *A. boryi*.



*Anacamptis boryi* © Ken R



*Ophrys creberrima*  
© Sotiris Alexiou

*Orchis pauciflora*, a few *Orchis quadripunctata* and *O. provincialis* were also there. *Neotinea lactea* and *N. maculata* were present, as was the only *Anacamptis (papilionacea) heroica* of the trip and a few *A. collina*. Some *Ophrys* species were also there, like *O. kedra*, *O. dictynnae*, *O. bombyliflora*, *O. cretica*, *O. ariadnae* and *O. creberrima*. We did enjoy some other plants, like *Silene cretica* and *S. dichotoma*. We easily spent a couple of hours here, and so decided to stop and have lunch.

Shortly after, we had a quick stop at a place with an impressive view, just to admire the endemic *Silene integripetala* and flowering *Thymelaea tartonraira*. This was followed by a longer visit, on the hunt for our fifth tulip of this trip: the *Tulipa cretica*. And we found it! This trip should be renamed 'five tulips in five days!'. But some other plants were there too for us to enjoy, our first *Ophrys phaidra*, a few *O. creberrima*, and some white-flowered *Lupinus pilosus*.

We returned a couple of hours earlier than usual to our hotel, to give the opportunity for some of us to enjoy a drink or walk around Plakias and the rest of us explored the area immediately to the east of the town and the sandy shores in front of it. The bushes of *Ebenus cretica* were in flower here. A huge bush on the shore proved to be *Juniperus macrocarpa*. *Ornithogalum creticum* was seen for the first time and *Echium arenarium* was on the sand, amongst leaves of *Pancratium maritimum*, plants of *Medicago marina* and several small annuals.

On the way to the taverna, a flock of herons was flying at the sea front. With the use of the binoculars, they were identified as Little Egrets *Egretta garzetta*.

### Day 7, 15 April.

This would be our last day dedicated to fully exploring the nature of this beautiful island. The destinations were not more than half an hour away. The Gorge of Kourtaliotis would be the first. A small chapel exists at about half its length, and a path leads to it. Lots of water was running in it, making a lot of noise. It wasn't long before the first Vultures appeared above us. Lots of the chasmophytes we had seen in previous days were there, especially *Scorzonera cretica*, but also a few *Ophrys bombyliflora* and our first *O. doerfleri*. We especially enjoyed *Cyclamen creticum* and *Asphodeline lutea* in big numbers, but also the strongly aromatic *Satureja thymbra*, flowering *Styrax officinalis* and our first Greek Sage *Salvia fruticosa*. A pair of Red-billed Chough *Pyrhocorax pyrrhocorax* were flying in the gorge, as well as Crag Martins.

We moved backwards towards Plakias. A short stop at the old bridge of Preveli, and a couple of short stops after that, before ending up above the exit of the gorge. The view to the river delta was amazing, as was the *Phoenix theophrasti* forest that surrounds it. *Nycticorax nycticorax* Black-crowned Night Herons were flying below us. Starting to explore, we had our first *Muscari spreitzenhoferi*, and soon big numbers of our first *Ophrys gortynia* side by side with *O. phaidra*. Finally, a beautiful male *Monticola solitarius* Blue Rock Thrush sat on a pole a few meters away from us, and we all enjoyed this rather close encounter.

Soon we moved to the famous monastery of Preveli and enjoyed our lunch under the shade. We preferred not to visit the interior, as we had other plans. After a short stop to photograph the second mullein species of the island which was in flower, *Verbascum macrurum*, we returned to our hotel. The plan was to explore the hill on the east side of Plakias. *Tachymarptis melba* Alpine Swifts were flying above us, as we walked the hill, enjoying the view. Our main find was the

*Asphodeline lutea* © Colin S





obscure *Aristolochia cretica*. There was time this afternoon for a cold drink and a sea swim, and our final meal together at a favourite taverna!

### Day 8, 16 April.

We had a lazy 2 hours at Plakias in the morning before our drive to the airport for onward connecting flights home. It had been a great week with wonderful scenery, plants and other wildlife.

## Species Lists

Notable Plants		10th Apr	11th Apr	12th Apr	13th Apr	14th Apr	15th Apr
		day 2	day 3	day 4	day 5	day 6	day 7
<b>Angiosperms</b>							
<b>Monocotyledons</b>							
<b>Amaryllidaceae</b>							
1	<i>Allium circinnatum</i>			✓			
<b>Araceae</b>							
2	Dragon Arum <i>Dracunculus vulgaris</i>			✓			
3	<i>Arum concinnatum</i>		✓				
<b>Asparagaceae</b>							
4	Tassel Hyacinth <i>Muscari comosum</i>	✓				✓	
5	<i>Muscari spreitzenhoferi</i> *						✓
6	<i>Ornithogalum creticum</i> *					✓	✓
<b>Asphodelaceae</b>							
7	Yellow Asphodel <i>Asphodeline lutea</i>				✓		✓
8	Branched Asphodel <i>Asphodelus ramosus</i>	✓			✓	✓	✓
<b>Iridaceae</b>							
9	Field Gladiolus <i>Gladiolus italicus</i>	✓		✓		✓	
10	Algerian Iris <i>Iris unguicularis</i>				✓		✓
11	Barbary Nut <i>Moraea sisyrinchium</i>				✓	✓	✓
12	Mediterranean Sand Crocus <i>Romulea bulbocodium</i>	✓			✓		
<b>Liliaceae</b>							

Notable Plants			10th Apr	11th Apr	12th Apr	13th Apr	14th Apr	15th Apr
			day 2	day 3	day 4	day 5	day 6	day 7
* denotes endemic or near-endemic species or subspecies.								
13	Greek Star-of-Bethlehem	<i>Gagea graeca</i>	✓	✓	✓			✓
14		<i>Gagea omalensis</i> *	✓					
15	Baker's Tulip	<i>Tulipa bakeri</i>	✓					
16	Cretan Tulip *	<i>Tulipa cretica</i>					✓	✓
17	Red Tulip of Crete *	<i>Tulipa doerfleri</i>				✓		
18	Tulip of Goulimis	<i>Tulipa goulimyi</i>	✓					
19	Candia Tulip	<i>Tulipa saxatilis</i>				✓		
<b>Orchidaceae</b>								
<b>Anacamptis GENUS</b>								
20	Bory's Orchid	<i>Anacamptis boryi</i>				✓	✓	
21	Fan-lipped Orchid	<i>Anacamptis collina</i>				✓	✓	
22		<i>Anacamptis heroica</i>					✓	
23	Loose-flowered Orchid	<i>Anacamptis laxiflora</i>		✓		✓	✓	
24	Pyramidal Orchid	<i>Anacamptis pyramidalis</i>			✓		✓	
<b>Himantoglossum GENUS</b>								
25	Giant Orchid	<i>Himantoglossum robertianum</i>				✓	✓	
<b>Limodorum GENUS</b>								
26	Violet Bird's-nest Orchid	<i>Limodorum abortivum</i>					✓	
<b>Neotinea GENUS</b>								
27	Milky Orchid	<i>Neotinea lactea</i>				✓	✓	
28	Dense-flowered Orchid	<i>Neotinea maculata</i>					✓	
29	Toothed Orchid	<i>Neotinea tridentata</i>				✓		
<b>Ophrys GENUS</b>								
<b><i>Ophrys fusca</i> group</b>								
30		<i>Ophrys creberrima</i>				✓	✓	
31		<i>Ophrys kedra</i>				✓	✓	
32		<i>Ophrys phaidra</i>					✓	✓
<b><i>Ophrys heldreichii</i> group</b>								

Notable Plants			10th	11th	12th	13th	14th	15th
			Apr	Apr	Apr	Apr	Apr	Apr
* denotes endemic or near-endemic species or subspecies.			day	day	day	day	day	day
			2	3	4	5	6	7
33		<i>Ophrys heldreichii</i>			✓	✓	✓	
<b><i>Ophrys holosericea</i> group</b>								
34		<i>Ophrys episcopalis</i>			✓	✓	✓	
<b><i>Ophrys iricolor</i> group</b>								
35	Rainbow Bee Orchid	<i>Ophrys iricolor</i>				✓		
<b><i>Ophrys lutea</i> group</b>								
36	Yellow Bee Orchid	<i>Ophrys lutea</i>				✓		
37		<i>Ophrys phryganae</i>	✓	✓	✓	✓	✓	
38	Small Yellow Bee Orchid	<i>Ophrys sicula</i>				✓		
<b><i>Ophrys mammosa</i> group</b>								
39		<i>Ophrys doerfleri</i>						✓
<b><i>Ophrys reinholdii</i> group</b>								
40		<i>Ophrys ariadnae</i>				✓	✓	
41		<i>Ophrys cretica</i>			✓	✓	✓	
<b><i>Ophrys sphegodes</i> group</b>								
42		<i>Ophrys cretensis</i>		✓				
43		<i>Ophrys gortynia</i>						✓
44		<i>Ophrys grammica</i>		✓				
<b><i>Ophrys tenthredinifera</i> group</b>								
45	Bumblebee Orchid	<i>Ophrys bombyliflora</i>				✓	✓	✓
46		<i>Ophrys dictynnae</i>				✓	✓	
<b>Orchis GENUS</b>								
47	Man Orchid	<i>Orchis anthropophora</i>				✓		
48	Naked Man Orchid	<i>Orchis italica</i>	✓	✓	✓	✓	✓	✓
49	Few-flowered Orchid	<i>Orchis pauciflora</i>		✓		✓	✓	
50	Provence Orchid	<i>Orchis provincialis</i>					✓	
51	Four-spotted Orchid	<i>Orchis quadripunctata</i>				✓	✓	
52	Monkey Orchid	<i>Orchis simia</i>					✓	

Notable Plants			10th Apr	11th Apr	12th Apr	13th Apr	14th Apr	15th Apr
			day 2	day 3	day 4	day 5	day 6	day 7
* denotes endemic or near-endemic species or subspecies.								
53		<i>Orchis sitiaca</i>				✓	✓	
<b>Hybrids</b>								
54	<i>Orchis x pseudoanatolica</i>	<i>Orchis pauciflora x Orchis quadripunctata</i>					✓	
<b>Serapias GENUS</b>								
55	Greek Plowshare	<i>Serapias bergonii</i>	✓	✓	✓		✓	✓
56	Tongue Orchid	<i>Serapias lingua</i>	✓	✓	✓	✓	✓	
57	Small-flowered Tongue Orchid	<i>Serapias parviflora</i>	✓		✓			
58	Long-lipped Tongue Orchid	<i>Serapias vomeracea</i>				✓		
<b>Smilacaceae</b>								
59	Smilax	<i>Smilax aspera</i>						✓
<b>Dicotyledons</b>								
<b>Anacardiaceae</b>								
60	Mastic	<i>Pistacia lentiscus</i>	✓		✓		✓	
61	Terebinth	<i>Pistacia terebinthus</i>					✓	
<b>Apiaceae</b>								
62	Rock Samphire	<i>Crithmum maritimum</i>					✓	
63	Wild Carrot	<i>Daucus carota</i>					✓	
64	Giant Fennel	<i>Ferula communis</i>	✓	✓	✓		✓	
65		<i>Ferulago nodosa</i>		✓				
66	Corky-fruited Water-dropwort	<i>Oenanthe pimpinelloides</i>	✓					
67	Cretan Pignut	<i>Scaligeria napiformis</i>	✓		✓			
68	Perfoliate Alexanders	<i>Smyrniium perfoliatum</i>				✓	✓	
69	Mediterranean Hartwort	<i>Tordylium apulum</i>	✓					
<b>Apocynaceae</b>								
70	Oleander	<i>Nerium oleander</i>		✓				
<b>Areaceae</b>								
71	Cretan Date Palm	<i>Phoenix theophrasti</i>						✓
<b>Aristolochiaceae</b>								

Notable Plants			10th Apr	11th Apr	12th Apr	13th Apr	14th Apr	15th Apr
			day 2	day 3	day 4	day 5	day 6	day 7
72	Cretan Birthwort *	<i>Aristolochia cretica</i>						✓
	<b>Asteraceae</b>							
73	Chios Chamomile	<i>Anthemis chia</i>	✓					
74	Birdcage Thistle	<i>Atractylis cancellata</i>			✓			
75	Annual Daisy	<i>Bellis annua</i>		✓				
76	Common Daisy	<i>Bellis perennis</i>	✓					
77	Italian Thistle	<i>Carduus pycnocephalus</i>		✓				
78	Silvery Knapweed	<i>Centaurea argentea</i>		✓				
79	Boar Thistle	<i>Galactites tomentosus</i>	✓				✓	✓
80	Slender Salsify	<i>Geropogon hybridus</i>			✓			
81	Crown Daisy	<i>Glebionis coronaria</i>	✓					
82	Corn Marigold	<i>Glebionis segetum</i>	✓					
83	Shrubby Everlasting	<i>Helichrysum stoechas</i>		✓	✓		✓	
		<i>Lactuca tuberosa</i>			✓			
84	Chamomile	<i>Matricaria chamomilla</i>	✓					
85	Spiny Golden Star	<i>Pallenis spinosa</i>		✓	✓		✓	✓
86	Rock Phagnalon	<i>Phagnalon rupestre</i>		✓	✓		✓	✓
87	Shrubby Knapweed	<i>Ptilostemon chamaepeuce</i>			✓		✓	
88	French Scorzonera	<i>Reichardia picroides</i>			✓		✓	
89	Cretan Viper's Grass *	<i>Scorzonera cretica</i>			✓			✓
90		<i>Staehelina fruticosa</i>			✓			
91	Cretan Gorge Laurel	<i>Staehelina petiolata</i>			✓			
92	European Umbrella Milkwort	<i>Tolpis barbata</i>			✓			
93	Salsify	<i>Tragopogon porrifolius</i>		✓	✓		✓	
	<b>Berberidaceae</b>							
94	Cretan Berberis	<i>Berberis cretica</i>	✓					
	<b>Boraginaceae</b>							
95		<i>Alkanna sieberi</i> *	✓	✓				

Notable Plants			10th Apr	11th Apr	12th Apr	13th Apr	14th Apr	15th Apr
			day 2	day 3	day 4	day 5	day 6	day 7
* denotes endemic or near-endemic species or subspecies.								
96	Undulate Alkanet	<i>Anchusa undulata</i>					✓	✓
97		<i>Anchusella variegata</i>			✓			
98	Borage	<i>Borago officinalis</i>	✓					
99	Greater Honeywort	<i>Cerintho major</i>						✓
100		<i>Cynoglossum columnae</i>				✓		✓
101	Blue Hound's-Tongue	<i>Cynoglossum creticum</i>	✓					✓
102	Sand Viper's Bugloss	<i>Echium arenarium</i>					✓	
103	Purple Viper's Bugloss	<i>Echium plantagineum</i>						✓
104		<i>Lithodora hispidula</i>		✓				
105	Yellow Gromwell	<i>Neostema apulum</i>						✓
106	Greek Golden Drops	<i>Onosma graecum</i>			✓			
107	Cretan Comfrey	<i>Symphytum creticum</i>			✓			✓
<b>Brassicaceae</b>								
108	Burnt Candytuft	<i>Aethionema saxatile</i>				✓		
109	False Rock Cress	<i>Aubrieta deltoidea</i>	✓					
110	Basket of Gold	<i>Aurinia saxatilis</i>			✓			
111	Buckler Mustard	<i>Biscutella didyma</i>	✓				✓	
112	Cretan Mustard	<i>Brassica cretica</i>					✓	
113	Sea Rocket	<i>Cakile maritima</i>					✓	
114	Shield Penny-Cress	<i>Clypeola jonthlaspi</i>	✓					
115	Aegean Stock	<i>Malcolmia chia</i>		✓	✓		✓	✓
116	Three-horned Stock	<i>Matthiola tricuspidata</i>					✓	
117	Cretan Ricotia *	<i>Ricotia cretica</i>						✓
<b>Campanulaceae</b>								
118	Small Bellflower	<i>Campanula erinus</i>		✓	✓			✓
119	Cretan Rock Lettuce *	<i>Petromarula pinnata</i>			✓			✓
<b>Caprifoliaceae</b>								
120	Asarum-leaved Valerian	<i>Valeriana asarifolia</i>			✓	✓	✓	✓

Notable Plants			10th Apr	11th Apr	12th Apr	13th Apr	14th Apr	15th Apr
			day 2	day 3	day 4	day 5	day 6	day 7
* denotes endemic or near-endemic species or subspecies.								
121	Annual Valerian	<i>Valeriana calcitrapae</i>		✓				
122	Red Valerian	<i>Valeriana rubra</i>			✓			
<b>Capparaceae</b>								
123	Common Caper	<i>Capparis spinosa</i>					✓	✓
<b>Caryophyllaceae</b>								
124	Wild Carnation *	<i>Dianthus juniperinus</i>		✓				
125	Hairy Pink	<i>Petrohragia dubia</i>			✓		✓	
126	Mediterranean Catchfly	<i>Silene colorata</i>					✓	✓
127	Cretan Catchfly	<i>Silene cretica</i>					✓	✓
128	Forked Catchfly	<i>Silene dichotoma</i>					✓	
129	Small-flowered Catchfly	<i>Silene gallica</i>	✓					✓
130	Integripetal Catchfly	<i>Silene integripetala</i>					✓	
131	Bladder Campion	<i>Silene vulgaris</i>		✓				
<b>Cistaceae</b>								
132	Cretan Cistus	<i>Cistus creticus</i>	✓		✓			
133	Small-flowered Cistus	<i>Cistus parviflorus</i>			✓			
134	Sage-leaved Cistus	<i>Cistus salviifolius</i>	✓	✓	✓			
135	Willow-leaved Rock-rose	<i>Helianthemum salicifolium</i>		✓				
136	Spotted Rock-rose	<i>Tuberaria guttata</i>			✓		✓	
<b>Convolvulaceae</b>								
137	Small Blue Bindweed	<i>Convolvulus siculus</i>		✓	✓			
<b>Crassulaceae</b>								
138	Wall Pennywort	<i>Umbilicus rupestris</i>			✓			
<b>Cytinaceae</b>								
139	Yellow Cytinus	<i>Cytinus hypocistis</i>	✓					
140	Red Cytinus	<i>Cytinus ruber</i>					✓	
<b>Ericaceae</b>								
141	Greek Strawberry Tree	<i>Arbutus andrachne</i>						

Notable Plants			10th Apr	11th Apr	12th Apr	13th Apr	14th Apr	15th Apr
			day 2	day 3	day 4	day 5	day 6	day 7
* denotes endemic or near-endemic species or subspecies.								
<b>Euphorbiaceae</b>								
142	Greek Spiny Spurge	<i>Euphorbia acanthothamnus</i>	✓	✓	✓		✓	✓
143	Mediterranean Spurge	<i>Euphorbia characias</i>	✓	✓	✓		✓	✓
144	Tree Spurge	<i>Euphorbia dendroides</i>		✓	✓			✓
145	Sun Spurge	<i>Euphorbia helioscopia</i>	✓				✓	
<b>Fabaceae</b>								
146	Yellow Kidney Vetch	<i>Anthyllis hermanniae</i>		✓				
147	Kidney Vetch	<i>Anthyllis vulneraria</i>				✓		
148	Pitch Trefoil	<i>Bituminaria bituminosa</i>	✓	✓	✓		✓	✓
149	Spiny Broom	<i>Calicotome villosa</i>	✓	✓	✓		✓	
150	Carob	<i>Ceratonia siliqua</i>		✓	✓			✓
151	Spiny Furze	<i>Chamaecytisus creticus</i>		✓			✓	✓
152	Cretan Ebony *	<i>Ebenus cretica</i>			✓		✓	✓
153	Thorny Broom	<i>Genista acanthoides</i>		✓				
154	Hairy Blue Lupin	<i>Lupinus pilosus</i>	✓				✓	
155	Sea Medick	<i>Medicago marina</i>					✓	
156	Cockshead Sainfoin	<i>Onobrychis caput-galli</i>		✓				
157	Bladder Vetch	<i>Tripodion tetraphyllum</i>		✓	✓			✓
<b>Fagaceae</b>								
158	Kermes Oak	<i>Quercus coccifera</i>	✓	✓	✓		✓	
159	Holm Oak	<i>Quercus ilex</i>			✓			
160	Downy Oak	<i>Quercus pubescens</i>	✓	✓			✓	
<b>Geraniaceae</b>								
161	Common Stork's-bill	<i>Erodium cicutarium</i>	✓					
162	Long-beaked Stork's-bill	<i>Erodium gruinum</i>			✓			
163	Dove's-foot Crane's-bill	<i>Geranium molle</i>	✓				✓	
164	Little Robin	<i>Geranium purpureum</i>	✓				✓	
165	Round-leaved Crane's-bill	<i>Geranium rotundifolium</i>		✓				

Notable Plants			10th Apr	11th Apr	12th Apr	13th Apr	14th Apr	15th Apr
			day 2	day 3	day 4	day 5	day 6	day 7
* denotes endemic or near-endemic species or subspecies.								
<b>Lamiaceae</b>								
166	Henbit Deadnettle	<i>Lamium amplexicaule</i>	✓				✓	
167	Red Deadnettle	<i>Lamium purpureum</i>	✓					
168	French Lavender	<i>Lavandula stoechas</i>	✓		✓			
169		<i>Nepeta scorditis</i>			✓			
170	Hop Marjoram	<i>Origanum dictamnus</i>			✓			
171	Cretan Jerusalem Sage	<i>Phlomis cretica</i>		✓	✓		✓	✓
172	Jerusalem Sage	<i>Phlomis fruticosa</i>		✓				
173	White Hedge-nettle	<i>Prasium majus</i>	✓	✓	✓			
174	Greek Sage	<i>Salvia fruticosa</i>						✓
175	Apple Sage	<i>Salvia pomifera</i>		✓				
176	Clary Sage	<i>Salvia viridis</i>			✓			✓
177	Whorled Savory	<i>Satureja thymbra</i>		✓	✓			✓
178		<i>Scutellaria sieberi</i> *		✓				
179	Round-toothed Ironwort	<i>Sideritis curvidens</i>		✓	✓			✓
180	Cretan Hedgenettle	<i>Stachys cretica</i>						✓
181	Spinulose Wood Betony	<i>Stachys spinulosa</i>		✓				
182	Conehead Thyme	<i>Thymbra capitata</i>	✓	✓	✓		✓	
<b>Lauraceae</b>								
183	Bay	<i>Laurus nobilis</i>			✓			
<b>Linaceae</b>								
184	Shrubby Flax	<i>Linum arboreum</i>			✓	✓		
185	Austrian Flax	<i>Linum austriacum</i>	✓					
186	Perennial Flax	<i>Linum perenne</i>	✓					
<b>Oleaceae</b>								
187	Mock Privet	<i>Phillyrea latifolia</i>		✓				
<b>Orobanchaceae</b>								
188	Bellardia	<i>Bellardia trixago</i>	✓		✓			

Notable Plants			10th Apr	11th Apr	12th Apr	13th Apr	14th Apr	15th Apr
			day 2	day 3	day 4	day 5	day 6	day 7
* denotes endemic or near-endemic species or subspecies.								
189	Bean Broomrape	<i>Orobanche crenata</i>			✓			
190	Red Bartsia	<i>Parentucellia latifolia</i>	✓		✓			
<b>Papaveraceae</b>								
191	Yellow Horned-Poppy	<i>Glaucium flavum</i>						✓
192	Prickly Poppy	<i>Papaver argemone</i>		✓				
193	Purple-fringed Poppy	<i>Papaver purpureomarginatum</i>						✓
194	Common Poppy	<i>Papaver rhoeas</i>	✓					✓
<b>Plantaginaceae</b>								
195	Jersey Toadflax	<i>Linaria pelisseriana</i>	✓				✓	
196	Glandular Plantain	<i>Plantago afra</i>		✓				
197	Buck's-horn Plantain	<i>Plantago coronopus</i>					✓	
<b>Platanaceae</b>								
198	Oriental Plane	<i>Platanus orientalis</i>	✓	✓				✓
<b>Primulaceae</b>								
199	Cretan Cyclamen *	<i>Cyclamen creticum</i>			✓			✓
<b>Ranunculaceae</b>								
200	Crown Anemone	<i>Anemone coronaria</i>	✓			✓		
201		<i>Anemone hortensis</i> subsp. <i>heldreichii</i>	✓	✓		✓	✓	✓
202	Turban Buttercup	<i>Ranunculus asiaticus</i>		✓	✓			✓
203	Cretan Buttercup	<i>Ranunculus creticus</i>			✓	✓		
204	Lesser Celandine	<i>Ranunculus ficaria</i>	✓					
205	Jersey Buttercup	<i>Ranunculus paludosus</i>	✓	✓				
<b>Rosaceae</b>								
206	Hawthorn	<i>Crataegus monogyna</i>	✓	✓				
207	Spiny Pear	<i>Pyrus spinosa</i>		✓			✓	
208	Salad Burnet	<i>Sanguisorba minor</i>					✓	
209	Spiny Burnet	<i>Sarcopoterium spinosum</i>	✓	✓	✓	✓		
<b>Rubiaceae</b>								

Notable Plants			10th Apr	11th Apr	12th Apr	13th Apr	14th Apr	15th Apr
			day 2	day 3	day 4	day 5	day 6	day 7
* denotes endemic or near-endemic species or subspecies.								
210	Field Madder	<i>Sherardia arvensis</i>		✓	✓		✓	
211	Bristly Crosswort	<i>Valantia hispida</i>			✓			
<b>Rutaceae</b>								
212	Fringed Rue	<i>Ruta chalepensis</i>						✓
<b>Sapindaceae</b>								
213	Cretan Maple	<i>Acer sempervirens</i>			✓			
<b>Saxifragaceae</b>								
214		<i>Saxifraga rotundifolia</i> subsp. <i>chrysospleniifolia</i>					✓	
215	Rue-leaved Saxifrage	<i>Saxifraga tridactylites</i>				✓		
<b>Scrophulariaceae</b>								
216	Pale Figwort	<i>Scrophularia lucida</i>			✓			
217	Cretan Mullein *	<i>Verbascum arcturus</i>		✓	✓	✓		✓
218	Eastern Mediterranean Mullein	<i>Verbascum macrurum</i>						✓
<b>Solanaceae</b>								
219	Mandrake	<i>Mandragora officinarum</i>		✓	✓			✓
<b>Styracaceae</b>								
220	Snowdrop Tree	<i>Styrax officinalis</i>						✓
<b>Thymelaeaceae</b>								
221	Silky Daphne	<i>Daphne sericea</i>				✓		
222		<i>Thymelaea tartonraira</i>					✓	
<b>Gymnosperms</b>								
<b>Cupressaceae</b>								
223	Mediterranean Cypress	<i>Cupressus sempervirens</i>	✓		✓			
224	Large-fruited Juniper	<i>Juniperus macrocarpa</i>					✓	
225	Turkish Pine	<i>Pinus brutia</i>	✓	✓	✓			

<b>Butterflies</b>			10th	11th	12th	13th	14th	15th
			Apr	Apr	Apr	Apr	Apr	Apr
* denotes endemic species			day	day	day	day	day	day
			2	3	4	5	6	7
<b>Family Papilionidae</b>								
1	Cretan Festoon *	<i>Zerynthia cretica</i>	✓	✓	✓			✓
<b>Family Hesperidae</b>								
2	Pygmy Skipper	<i>Gegenes pumilio</i>			✓			
3	Mallow Skipper	<i>Carcharodus alceae</i>	✓					
<b>Family Pieridae</b>								
4	Cleopatra	<i>Gonepteryx cleopatra</i>	✓		✓			✓
5	Clouded Yellow	<i>Colias croceus</i>	✓	✓		✓		✓
6	Large White	<i>Pieris brassicae</i>	✓					
<b>Family Lycaenidae</b>								
7	Small Copper	<i>Lycaena phlaeas</i>	✓					
8	Long-tailed Blue	<i>Lampides boeticus</i>						✓
9	Holly Blue	<i>Celastrina argiolus</i>				✓		
10	Common Blue	<i>Polyommatus icarus</i>	✓			✓		
<b>Family Nymphalidae</b>								
11	Speckled Wood	<i>Pararge aegeria</i>	✓	✓	✓		✓	
12	Wall	<i>Lasiommata megera</i>	✓		✓	✓		

<b>Birds</b>			10th	11th	12th	13th	14th	15th
			Apr	Apr	Apr	Apr	Apr	Apr
* denotes endemic or near-endemic species or subspecies. Species seen are marked with a ✓, those heard but not seen are marked with 🎵.			day	day	day	day	day	day
			2	3	4	5	6	7
1	Chukar	<i>Alectoris chukar cypristes</i>			✓			
2	Collared Dove	<i>Streptopelia decaocto</i>		✓				
3	Wood Pigeon	<i>Columba palumbus</i>	✓	✓				
4	Rock Dove	<i>Columba livia</i>	✓	✓				
5	Common Sandpiper	<i>Actitis hypoleucos</i>					✓	
6	Yellow-legged Gull	<i>Larus michahellis</i>		✓				
7	Great Cormorant	<i>Phalacrocorax carbo</i>					✓	✓

8	Little Egret	<i>Egretta garzetta</i>					✓	✓
9	Black-crowned Night Heron	<i>Nycticorax nycticorax</i>						✓
10	Alpine Swift	<i>Tachymarptis melba</i>						✓
11	Common Swift	<i>Apus apus</i>	✓	✓				
12	Griffon Vulture	<i>Gyps fulvus</i>	✓	✓	✓	✓		✓
13	Short-toed Eagle	<i>Circaetus gallicus</i>						
14	Common Buzzard	<i>Buteo buteo</i>		✓			✓	✓
15	Hoopoe	<i>Upupa epops</i>				✓		
16	European Bee-eater	<i>Merops apiaster</i>					♪♪	
17	Kestrel	<i>Falco tinnunculus</i>	✓	✓				
18	Peregrine	<i>Falco peregrinus</i>		✓				
19	Red-billed Chough	<i>Pyrrhocorax pyrrhocorax docilis</i>	✓					✓
20	Jackdaw	<i>Coloeus monedula soemmerringii</i>						✓
21	Raven	<i>Corvus corax</i>	✓	✓				
22	Carrion (Hooded) Crow	<i>Corvus corone cornix</i>	✓	✓				
23	Blue Tit	<i>Cyanistes caeruleus calamensis</i> *						✓
24	Great Tit	<i>Parus major aphrodite</i>		✓				
25	Woodlark	<i>Lullula arborea pallida</i>				✓		
26	Crag Martin	<i>Ptyonoprogne rupestris</i>		✓				✓
27	Barn Swallow	<i>Hirundo rustica</i>	✓	✓			✓	✓
28	Red-rumped Swallow	<i>Cecropis rufula</i>		✓				
29	Cetti's Warbler	<i>Cettia cetti</i>	♪♪				♪♪	
30	Sardinian Warbler	<i>Curruca melanocephala</i>	✓				✓	
31	Blackbird	<i>Turdus merula</i>	✓					
32	Common Redstart	<i>Phoenicurus phoenicurus</i>						✓
33	Blue Rock Thrush	<i>Monticola solitarius</i>						✓
34	Stonechat	<i>Saxicola rubicola</i>				✓		
35	House Sparrow	<i>Passer domesticus</i>	✓					
36	Chaffinch	<i>Fringilla coelebs</i>	✓				✓	✓
37	Goldfinch	<i>Carduelis carduelis balcanica</i>			✓			✓
38	Corn Bunting	<i>Emberiza calandra</i>		✓		✓		

Other Notable Taxa		10th	11th	12th	13th	14th	15th
		Apr	Apr	Apr	Apr	Apr	Apr
		day	day	day	day	day	day
		2	3	4	5	6	7
<b>Fungi</b>							
1	Red Cage Stinkhorn <i>Clathrus ruber</i>					✓	
<b>Invertebrates</b>							
2	A Longhorn Micromoth <i>Adela orientella</i>				✓		
3	Egyptian Grasshopper <i>Anacridium aegyptium</i>	✓					✓
4	Cretan Giant Centipede <i>Scolopendra cretica</i>						✓
<b>Reptiles</b>							
5	Cretan Wall Lizard <i>Podarcis cretensis</i>		✓	✓			

### Photo Gallery





*Oxalis pes-caprae* © Lyn R



*Aristolochia cretica* © Colin S



*Lithodora hispidula* © Colin S



*Calliptamus* sp. nymph on *Cistus creticus* © Lyn R



*Symphytum creticum* © Colin S



*Orchis italica* © Ken R



*Ophrys sicula* © Sotiris Alexiou



*Euphorbia dendroides* © Colin S



*Orchis anthropophora* © Lyn R



*Egyptian Grasshopper* © Ken R



*Orchis simia* © Colin S



*Ophrys episcopalis*  
© Sotiris Alexiou



*Orchis italica* © Lyn R



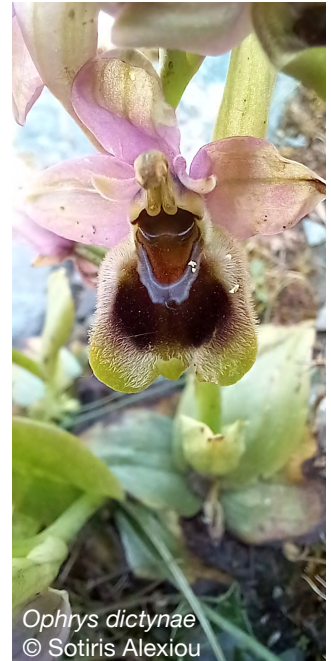
*Anacamptis collina* © Colin S



*Serapias lingua* © Ken R



*Tuberaria guttata* © Colin S



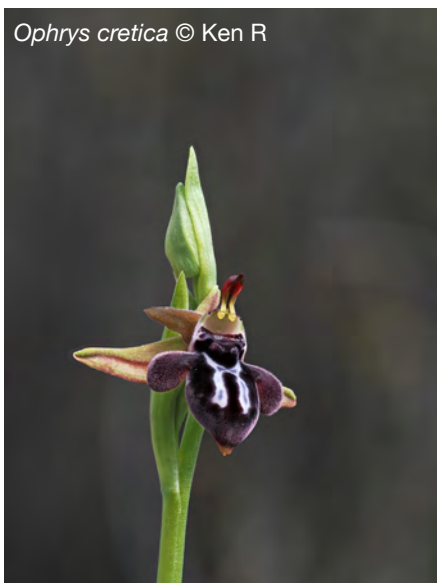
*Ophrys dictynae*  
© Sotiris Alexiou

*Ophrys lutea* © Colin S

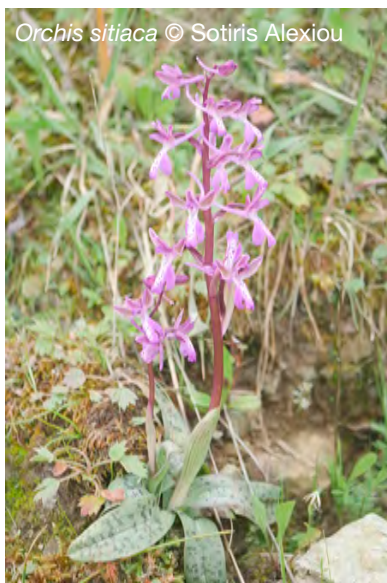


*Tulipa goulimyi* © Colin S

*Ophrys cretica* © Ken R



*Orchis sitiaca* © Sotiris Alexiou



*Ophrys heldreichii* © Lyn R



*Neotinea tridentata* © Colin S



*Orchis simia* © Ken R



*Asphodeline lutea* © Sotiris Alexiou





*Silene gallica* © Colin S



*Ophrys phedra* © Colin S



*Tulipa doerfleri* © Lyn R



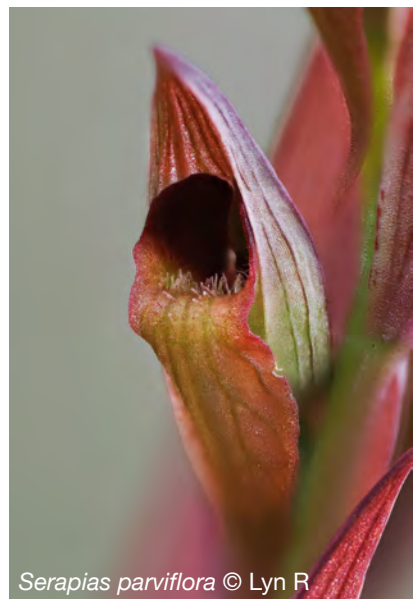
© Ken R



*Ophrys heldreichii* © Colin S



*Serapias lingua* © Sotiris Alexiou



*Serapias parviflora* © Lyn R



*Orchis italica* © Colin S



*Tulipa doerfleri* © Colin S



*Orchis provincialis* © Colin S



*Serapias lingua* © Ken R



*Ophrys grammica* © Ken R



Cretan Festoon © Sotiris Alexiou



*Tulipa saxatilis* © Sotiris Alexiou



© Sotiris Alexiou



*Ophrys heldreichii* © Sotiris Alexiou



*Ophrys gortynia* © Sotiris Alexiou



*Ophrys Kedra* © Sotiris Alexiou