

Duke of Burgundy & Pearl-bordered Fritillary Day Trip

**14th May 2025
Led by Terry Goble**



Greenwings Wildlife Holidays

Tel: 01473 254658

Web: www.greenwings.co.uk

Email: enquiries@greenwings.co.uk

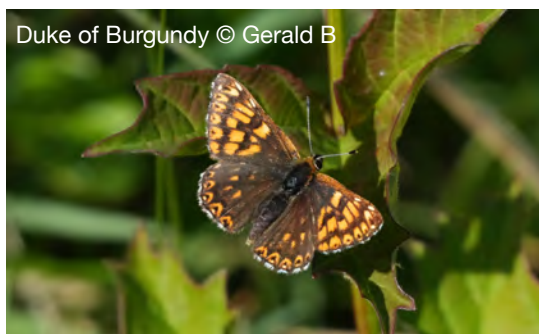
Linktree: <https://linktr.ee/greenwingstours>

Duke of Burgundy and Pearl-bordered Fritillary Day Trip

14th May 2025

Led by Terry Goble

We met at 9:15 am at the train station with all but two of the group waiting there. We picked up the last members of the group from Erringham Road a few minutes later. It had been a warm early morning, with a little breeze, bringing a refreshing coolness to the air. The sky was azure blue and virtually cloudless, hopes were high for a very successful day and it didn't disappoint.

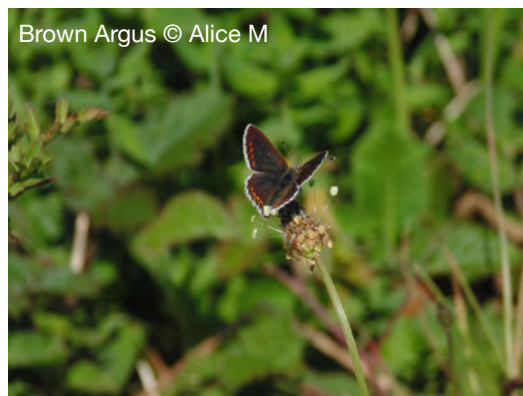


Duke of Burgundy © Gerald B

After a brief stop for toilets and snacks we drove over beyond Storrington to our first site of the day. It is a lovely, but very small reserve that has been very well managed to ensure the population of the Duke of Burgundy continues to thrive. Only a week after our last visit all the cowslips had now 'gone over', however there were still plenty of Dukes on the wing and were seen all around the reserve and even outside. Also surprisingly numerous were the Green Hairstreaks,

flitting around the mixed Hazel hedgerow and down amongst the herbaceous sward.

Overhead Common Buzzard and Red Kites soared on the thermals, whilst Common Whitethroat, Blackcap and Song Thrush called from the shrubs. Other butterflies enjoyed at this site included Brimstone, Dingy and Grizzled Skipper and a few Brown Argus. Only one Small Blue was seen among plenty of Common and Holly Blues, unfortunately this was only seen by one of the group. A lovely male Orange Tip was enjoyed by most of the group as it was now time to leave for another site. The afternoon beckoned and it was now feeling very warm up on the downs.



Brown Argus © Alice M

On route we passed Anchor Bottom and I made an impromptu decision to stop briefly to explore the area. There were a decent number of Common and Adonis Blues, looking stunning with their cobalt blue upperwings gleaming in the afternoon sun. This was just a quick visit and we were soon underway, stopping for a break in Lewes, before continuing to our next site.

We managed to park quite easily at the reserve, which is a SSSI managed by Butterfly



Pearl-bordered Fritillary © Alice M

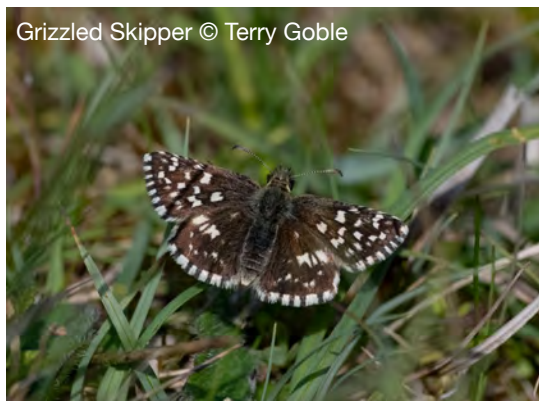
Conservation. As we entered the reserve we encountered Speckled Yellow Moths and soon we saw our first Pearl-bordered Fritillaries, batting along the main ride. We enjoyed a few sightings of slightly worn looking fritillaries. A much fresher individual was suspected to be the slightly later emerging Small Pearl-bordered fritillary. There continued to be regular sightings of Pearl-bordered Fritillaries and Tiger Beetles. We also encountered our first dragonflies, which were a welcome addition.

We reached the 'plateau' area and were pleased to see several more fritillaries and an underside photograph confirmed that the fresher individuals were indeed Small Pearl-bordered, a very welcome bonus! More sightings of Dingy and Grizzled Skipper were enjoyed and Brimstones (mating) were common sightings. We also added our first reptile as a young Grass Snake and later a

Common Lizard were seen.

We left the 'plateau' and headed back to the car a short walk away. We were now heading for the last destination of the day, a site close to our drop off sites. We decided to end the day at a typical downland site north of Shoreham.

The sun was still beating down and the south facing slopes were now very warm. We saw a number of Dingy Skippers and a few very fresh Grizzled Skippers. A few Small Heaths, Brimstones and Common Blues and pleasingly more Adonis Blues. A Painted Lady and a quick glimpse of Wall Brown were new species for the day. We also saw the tail of a Slow Worm and a gorgeous female and juvenile Adder to add to our reptiles.



Grizzled Skipper © Terry Goble

As it was now approaching 5pm it was time to drift back to the car. We all traversed the steep slopes back to the car park. On our way back down we dropped a few clients on route to the station. We arrived back just around 5:30pm and said our 'goodbyes' after a very successful day trip seeing all our target species and a few more!

Species Lists

Butterflies:

Dingy Skipper	<i>Erynnis tages</i>
Grizzled Skipper	<i>Pyrgus malvae</i>
Brimstone	<i>Gonepteryx rhamni</i>
Large White	<i>Pieris brassicae</i>
Small White	<i>Pieris rapae</i>
Green-veined White	<i>Pieris napi</i>
Orange-tip	<i>Anthocharis cardamines</i>
Common Blue	<i>Polyommatus icarus</i>
Duke of Burgundy	<i>Hamearis lucina</i>
Green Hairstreak	<i>Callophrys rubi</i>
Holly Blue	<i>Celastrina argiolus</i>
Small Blue	<i>Cupido minimus</i>
Brown Argus	<i>Aricia agestis</i>
Adonis Blue	<i>Lysandra bellargus</i>
Common Blue	<i>Polyommatus icarus</i>
Small pearl-bordered Fritillary	<i>Boloria selene</i>
Pearl-bordered Fritillary	<i>Boloria euphrosyne</i>
Painted Lady	<i>Vanessa cardui</i>
Red Admiral	<i>Vanessa atalanta</i>
Peacock	<i>Aglais io</i>
Small Heath	<i>Coenonympha pamphilus</i>
Speckled Wood	<i>Pararge aegeria</i>
Wall	<i>Lasiommata megera</i>

Birds:

Common Buzzard	<i>Buteo buteo</i>
Red Kite	<i>Milvus milvus</i>
Common Kestrel	<i>Falco tinnunculus</i>
Wood Pigeon	<i>Columba palumbus</i>
Green woodpecker 🎵🎵	<i>Picus viridis</i>
Rook	<i>Corvus frugilegus</i>
Eurasian Jackdaw	<i>Corvus monedula</i>
Carrion Crow	<i>Corvus corone</i>
Blackbird	<i>Turdus merula</i>
Song Thrush	<i>Turdus philomelos</i>
Garden Warbler 🎵🎵	<i>Sylvia borin</i>
Blackcap 🎵🎵	<i>Sylvia atricapilla</i>
Common Whitethroat	<i>Sylvia communis</i>
Chiffchaff 🎵🎵	<i>Phylloscopus collybita</i>

Reptiles/Amphibians:

Adder	<i>Vipera berus</i>
Grass snake	<i>Natrix natrix</i>
Slow Worm	<i>Anguis fragilis</i>
Viviparous Lizard	<i>Zootoca vivipara</i>

Other Invertebrates:

Common Carder Bee	<i>Bombus pascuorum</i>
Green Tiger Beetle	<i>Cicindela campestris</i>
Common Carpet Moth	<i>Epirrhoe alternata</i>
Burnet Companion	<i>Euclidia glyphica</i>
Swollen-thighed Flower Beetle	<i>Oedemera nobilis</i>
Scorpion Fly	<i>Panorpa communis</i>
Brown Silver-line	<i>Petrophora chlorosata</i>
Dark Bush Cricket (Nymphs)	<i>Pholidoptera griseoptera</i>
Speckled Yellow	<i>Pseudopanthera macularia</i>
Purple-and-gold	<i>Pyrausta aurata</i>
Cinnabar Moth	<i>Tyria jacobaea</i>
Variable Damselfly	<i>Coenagrion pulchellum</i>
Common Blue Damselfly	<i>Enallagma cyathigerum</i>
Emperor Hawker	<i>Anax imperator</i>
Broad-bodied Chaser	<i>Libellula depressa</i>
Scarce Chaser	<i>Libellula fulva</i>

Photo Gallery

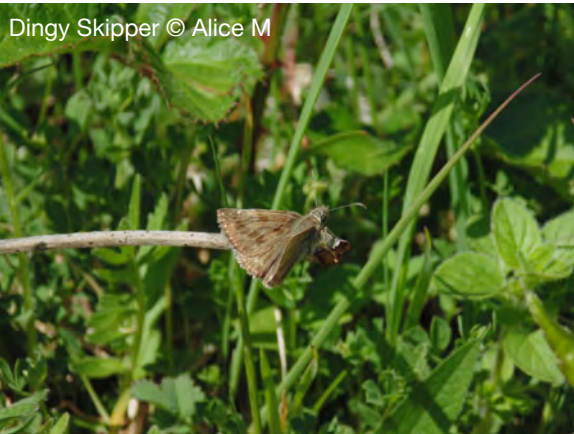
Duke of Burgundy © Terry Goble



Common Blue Damselfly © Gerald B



Dingy Skipper © Alice M



Pearl-bordered Fritillary © Gerald B



Duke of Burgundy © Alicé M



Green Hairstreak © Alicé M



Pearl-bordered Fritillary © Gerald B



Duke of Burgundy © Terry Goble





Small Pearl-bordered Fritillary © Alice M



Adonis Blue © Alice M