

**Rhodes Orchid Odyssey**  
2nd - 9th April 2023



**Greenwings Wildlife Holidays**

Tel: 01473 254658

Web: [www.greenwings.co.uk](http://www.greenwings.co.uk)

Email: [enquiries@greenwings.co.uk](mailto:enquiries@greenwings.co.uk)

## Rhodes Orchid Odyssey 2nd - 9th April 2023

### April 2<sup>nd</sup>

Arrival at Diagoras airport on Rhodes. Once everyone had gathered, the remainder of the day was taken up with transferring from the airport to the hotel.

### April 3<sup>rd</sup>

We assembled at 9.00 am for a briefing and then set off to walk on a local path near the village to explore the slopes on this side of Attaviros mountain. The path wound up the slope, passing through scrub rich in flowers. Many annuals in the Fabaceae were in flower as well as orchids growing among them. We found the dark blue *Muscari neglectum* as well as *M. commosum*, *Erodium gruinum*, *Salvia fruticosa*, the beautiful *Ornithogalum nutans*, *Ophrys omegaifera*, *Orchis*



*Ophrys ferrum-equinum* © Bob M

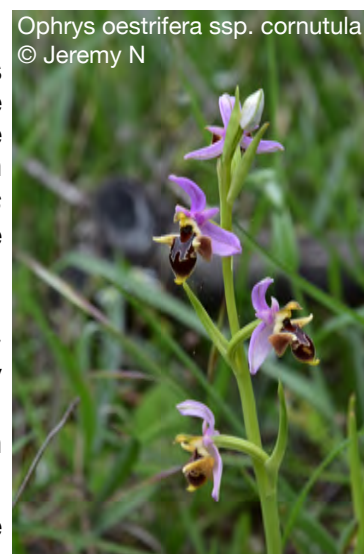
*anatolica*, *Asphodelus ramosus*, *Arisarum vulgare*, *Quercus coccifera*, *Ranunculus creticus*, *Anemone coronaria*, *Arabis verna*, *Anchusa undulata* subsp. *hybrida*, *Cyclamen rhodium*, and scattered *Ophrys ferrum-equinum*, but also an amazing collection of about 70 plants, beautifully in flower. We saw and photographed Eastern Festoon and Green Hairstreak butterflies. It was now nearing lunchtime so we returned to the hotel and set off down the road into the village for coffee before taking a 15 minute drive higher up Attaviros to where we had our picnic. The area is dominated by *Cypressus sempervirens* and *Pinus brutia* woodland.

During the afternoon we explored the area there finding *Ophrys fusca* subsp. *cinereophila*, *Ophrys candida*, *Ophrys reinholdii*, *Orchis anatolica* and the first flowers of *Limodorum abortivum*. Green-underside Blue and Green Hairstreak butterflies were on the wing. We walked down the road looking at the verges and finding more *Ophrys reinholdii* in excellent order. Our final stop was a short distance from the village to look at another beautiful Rhodian orchid, *Ophrys lucis*.

### April 4<sup>th</sup>

The morning dawned cold and rainy, but by the time breakfast was over the sky had cleared and we set off due south to Katavia. We slowly descended observing the landscape changing from pine forest to garigue. Our first stop was on a hillside with low cushion plants. *Cistus parviflorus*, *Asphodelus fistulosus* and *Glebionis coronaria* were in full flower. A Raven was seen flying overhead. We searched the hillside, finding *Ophrys oestriifera* subsp. *cornutula*, *Serapias orientalis*, *Anacamptis coriophora*, *Anacamptis pyramidalis*, *Ophrys parvula*, *Ophrys cretica* subsp. *beloniae*, *Ophrys regis-ferdinandii*, *Ophrys calypsus* and *Ophrys iricolor*. We found many other plants as well, such as *Pallenis spinosa*, *Cytinus hypocistis*, *Blackstonia perfoliata* and *Reseda lutea*. Finally one good specimen of *Ophrys speculum* was found.

We then drove a short distance and stopped for lunch at a little church. Here we saw more *Ophrys cretica* subsp. *beloniae*, *Ophrys regis-ferdinandii*, *Ophrys oestriifera* subsp. *cornutula* and *Serapias parviflora*, one of the rarer species in the genus. Not far from here we saw a field full of *Gladiolus italicus*. Our next stop was a little way down the road to Prasonisi where we found *Alkanna tinctoria*, *Anchusa azurea* and a large colony of *Ophrys rhodia*. A single specimen of *Ophrys calypsus* was also found.



*Ophrys oestriifera* ssp. *cornutula*  
© Jeremy N

We started to retrace our steps back to Embonas, stopping at a beach. The normally very colourful beach was drying up because of the early season. We saw the endemic *Campanula rhodia*, *Rumex bucephalophorus* and *Ononis natrix*. Two Woodchat shrikes provided good views. Our final stop on the way back was to see *Centaurea lactucifolia*, finding it in good flower.

## April 5<sup>th</sup>

It was cloudy again this morning as we set off towards Profitis Elias. This is an area dominated by

Neotinea lactea © Graham P



*Cupressus sempervirens* and *Pinus brutia*. The understory is carpeted with *Anemone blanda* and *Cyclamen rhodium*. Stopping at an area just Profitis Elias before we began our search for orchids. We found *Ophrys reinholdii*, *Ophrys oreas* and *Ophrys dodekanensis*, *Ophrys ferrum-equinum*, *Ophrys sicula*, *Anacamptis papilionaceae*, *Orchis provincialis*, and *Neotinea maculata*. Searching a bit further we found *Paeonia clusii* subsp. *rhodia* in flower. Moving higher up the hill, a different set of orchids awaited us. We found beautiful *Anacamptis picta* and *Neotinea lactea* in good flower. Also more *Orchis provincialis*, *Ranunculus paludosus*, *Echium plantagineum* and *Tuberaria gutata*.

Having explored the site we then drove past Profitis Elias and started to descend towards Laerma, via Apollona. We made a brief stop to photograph *Scilla hyacinthoides* and then stopped for lunch.

After our picnic we searched and found *Ophrys mammosa* and *Orchis italica*. Many Green Hairstreaks and Green-underside Blues were on the wing, feeding on the Asphodels. We continued, stopping at the Italian bridge to see more *Orchis italica* and also finding *Ophrys heldreichii* subsp. *polyxo* and a number of ferns.

Our next stop was at the lake on Gaidouras river where we searched the scree for specialist plants, finding *Campanula rhodensis*, *Gypsophila confertifolia*, *Trifolium grandiflorum*, *Linaria micrantha* and *Linaria pelisseriana*. We also found many *Fritillaria rhodia* and *Serapias politisii*. An interesting moth drew our attention, turning out to be *Arctia festiva*, the Hebe Tiger Moth. A Pygmy Skipper was also seen. Another stop produced two new orchids, *Anacamptis laxiflora* and *Ophrys bombyliflora*. We stopped once more to see *Silene salamandra* and also finding many more *Fritillaria rhodia*.

Fritillaria rhodia © Yiannis Christofides



Ophrys colossea © Bob M

## April 6<sup>th</sup>

With another cloudy start to the day, we crossed the island to the east coast in search of sunshine and calm weather, as sporadic cloud and rain was forecast across the much of the island. Our first site proved reliable for *Ophrys colossea*, with several fine plants in flower beneath olive trees. Further back in the olive grove we found more *Ophrys mammosa*, *Ophrys rhodia*, and *Ophrys heldreichii* subsp. *polyxo*. Many *Serapias politisi* were found throughout the area, including a hypochromic individual. As we walked back towards the vehicles a lone orchid proved to be a fine *Ophrys bilunulata*.

The nearby beach was a happy hunting ground for some non-orchids, including yellow mounds of *Alyssum sibiricum*, and a flowering *Dianthus critinus*. Birds here were better still, with a small flock of Short-toed Larks seen, as well as Tawny Pipit and Black-eared Wheatear. The drive to our lunch site further down the coast was to yield a Blue Rock Thrush

too.

Lunch was taken in an area of olive groves further inland – a short walk after lunch found us surrounded by many *Serapias carica* and *Ophrys oestriifera* subsp. *cornutula*. Closer inspection of the *Ophrys* revealed some more *Ophrys heldreichii* subsp. *polyxo*, and a fine example of *Ophrys umbilicata*. Nearby two more *Orchis anthropophora* were added to the day's tally.

One final olive grove for the day gave us the expected *Ophrys blitopertha* in profusion and fine condition and, amongst them, some newly opened *Ophrys attaviria* too. Yet another surprise came in the form of a single example of *Ophrys apollonae*. We left as the skies darkened and the first spots of rain were felt. The journey back to the hotel featured thunder, lightning, and torrential rain.



*Ophrys blitopertha* © Jeremy N

### April 7<sup>th</sup>

After a continued thunderstorm overnight, we woke to the promise of a brighter day. We headed back to the south of the island but, this time, inland and high on a hill with a commanding view of the coast all around us. The hill was covered with scrubby vegetation that, at first glance, may have seemed unpromising, but on closer inspection was hiding a wide variety of orchids, some familiar to the group, but a handful of new ones in their midst – *Ophrys sitiaca*, *Ophrys lutea* subsp. *phryganae*, and *Ophrys tenthredinifera*. These were in addition to *Anacamptis papilionacae*, *Ophrys reinholdii*, *Ophrys ferrum-equinum*, and *Ophrys dodekanensis* alongside yet more *Ophrys heldreichii* subsp. *polyxo*.



*Ophrys reinholdii* © Graham P

Moving half a mile downhill after lunch yielded more of the same, but with many *Ophrys bombyliflora*, some dainty fritillaries, and an *Ornithogalum* that Yiannis declined to identify as Rhodes is home to a great many similar species. We made our way back towards our hotel, distracted by some good bird sightings from the vehicle – Chukar, many Woodchat Shrikes, and a showy Hoopoe. Before

we called it a day though, we spent an hour back up Mt Attaviros, where we found *Limodorum abortivum* coming into flower at last, and more and better *Ophrys candica* than hitherto. A Wryneck put in an appearance at the same place we had seen it earlier in the week.

### April 8<sup>th</sup>

With our orchid list now sitting on a magnificent 46 species, a record total for this tour, we knew we'd effectively wiped the board, and had a free day at our disposal. We decided to pioneer, and to explore some parts of the island we were unfamiliar with. The morning began near Kymissala, where we walked a long woodland track towards the eponymous necropolis. A few orchids were forthcoming – *Neotinea maculata*, *Ophrys candica*, *lutea* subsp. *phryganae*, and *fusca* subsp. *cinereophila* – but we weren't overwhelmed with either species or numbers.

The necropolis itself was a pleasing diversion, however, and we wandered amongst the small tombs carved into the living rock for a short while before returning to the vehicles. Honeybees belonging to the many hives in the general area were getting more active and curious about us, so we decided to beat a prudent retreat. Before leaving, we found a few *Ophrys rhodia* in the grass beside the vehicles, and a dung beetle in the road that was plainly delighted to be introduced to some fresh sheep droppings.

Heading towards Monolithos, another speculative stop yielded a small colony of *Ophrys regis-ferdinandii* and, in its midst, a single example of its hybrid with *O. speculum*. A nearby Green-underside Blue was much



*Ophrys regis-ferdinandii*  
© Jeremy N

admired. We climbed up to the acropolis of Monolithos, a cultural diversion that also gave us a fine example of *Campanula hagielia* growing from the blockwork of the castle walls. We climbed back down to meet up with Matt Berry for lunch on a nearby beach, and then decided to head towards Embonas and explore the vicinity of a small colony of *Ophrys mammosa* Yiannis had found a week ago.



*Ophrys bombyliflora* © Jeremy N

We walked two tracks that led away from this spot. The first was disappointing, with just a few *Ophrys reinholdii* to show for our efforts. The second track was superb – within half a mile we notched up immaculate *Ophrys reinholdii*, *mammosa*, *sicula*, *oestrifera* subsp. *cornutula*, *regis-ferdinandii*, *bombyliflora* and *bilunulata*, and discovered a new colony of *Serapias parviflora* for good measure!

With the afternoon wearing on, this seemed like a good point at which to draw the orchid-hunting to a close. No new species added today, but we'd not expected to do so... but what a site we'd uncovered together as our parting gesture in Rhodes!

### Systematic Species Checklists

Orchids			3rd Apr	4th Apr	5th Apr	6th Apr	7th Apr	8th Apr
			Day 2	Day 3	Day 4	Day 5	Day 6	Day 7
Endemic and near endemic species are noted with ☆								
<b>Ophrys speculum group</b>								
1	King Ferdinand's Ophrys	<i>Ophrys regis-ferdinandii</i>		✓				✓
2	Eastern Mirror Orchid	<i>Ophrys speculum</i>		✓				
3	<i>O. regis-ferdinandii</i> x <i>O. speculum</i>	<i>Ophrys</i> x <i>butleri</i>						✓
<b>Ophrys iricolor group</b>								
4	Rainbow Bee Orchid	<i>Ophrys iricolor</i>		✓		✓		
<b>Ophrys mammosa group</b>								
5	Horseshoe Orchid	<i>Ophrys ferrum-equinum</i>	✓				✓	
6	Rhodian Horseshoe Orchid ☆	<i>Ophrys lucis</i>	✓					
7	Breasted Ophrys	<i>Ophrys mammosa</i>			✓	✓		✓
<b>Ophrys lutea group</b>								
8	Phrygana Bee Orchid	<i>Ophrys lutea</i> ssp. <i>phryganae</i>					✓	✓
9	Small Yellow Bee Orchid	<i>Ophrys sicula</i>	✓	✓	✓	✓	✓	✓
<b>Ophrys reinholdii group</b>								
10	Reinhold's Bee Orchid	<i>Ophrys reinholdii</i>	✓		✓		✓	✓
11	Cretan Bee Orchid ☆	<i>Ophrys cretica</i> ssp. <i>beloniae</i>		✓				
<b>Ophrys umbilicata group</b>								
12	Rhodian Woodcock Orchid ☆	<i>Ophrys rhodia</i>		✓		✓		✓
13	Bumblebee Orchid	<i>Ophrys bombyliflora</i>			✓		✓	✓

Orchids			3rd Apr	4th Apr	5th Apr	6th Apr	7th Apr	8th Apr
			Day 2	Day 3	Day 4	Day 5	Day 6	Day 7
Endemic and near endemic species are noted with ☆								
14	Carmel Bee Orchid	<i>Ophrys umbilicata</i>				✓		
	<b>Ophrys fusca group</b>							
15	Attaviros Bee Orchid	<i>Ophrys attaviria</i>				✓		
16	An Ophrys	<i>Ophrys bilunulata</i> ssp. <i>punctulata</i>				✓		✓
17	Beetle Ophrys	<i>Ophrys blitopertha</i>				✓		
18	Small-flowered Brown Orchid	<i>Ophrys fusca</i> ssp. <i>cinereophila</i>	✓		✓			✓
19	An Ophrys	<i>Ophrys parvula</i>		✓		✓		
20	An Ophrys	<i>Ophrys sitiaca</i>				✓		
	<b>Ophrys omegaifera group</b>							
21	Apollona Bee Orchid	<i>Ophrys apollonae</i>			✓	✓		
22	Royal Ophrys	<i>Ophrys omegaifera</i>	✓			✓	✓	✓
	<b>Ophrys holoserica group</b>							
23	White Ophrys	<i>Ophrys candica</i>	✓				✓	✓
24	Colossus Orchid ☆	<i>Ophrys colossaea</i>				✓		
25	Profitis Ilias Bee Orchid ☆	<i>Ophrys oreas</i>			✓			
	<b>Ophrys heldreichii group</b>							
26	Calypso Bee Orchid	<i>Ophrys calypsus</i>		✓				
27	Rhodian Horned Ophrys ☆	<i>Ophrys heldreichii</i> ssp. <i>polyxo</i>			✓	✓	✓	✓
	<b>Ophrys oestrifera group</b>							
28	Small Horned Bee Orchid	<i>Ophrys oestrifera</i> ssp. <i>cornutula</i>		✓	✓	✓	✓	✓
29	Dodecanese Orchid ☆	<i>Ophrys dodekanensis</i>			✓		✓	
	<b>Ophrys tenthredinifera group</b>							
30	Sawfly Orchid	<i>Ophrys tenthredinifera</i>					✓	
	<b>Serapias group</b>							
31	Bergoni's Serapias	<i>Serapias bergonii</i>			✓			
32	Carican Serapias	<i>Serapias carica</i>		✓		✓	✓	
33	Small-flowered Serapias	<i>Serapias parviflora</i>		✓		✓		✓
34	A Serapias	<i>Serapias politisii</i>	✓		✓	✓		
	<b>Himantoglossum group</b>							
35	Giant Orchid	<i>Himantoglossum robertianum</i>	✓					
	<b>Anacamptis group</b>							
36	Fragrant Bug Orchid	<i>Anacamptis coriophora</i> ssp. <i>fragrans</i>		✓		✓		
37	Lax-flowered Orchid	<i>Anacamptis laxiflora</i>			✓			

<b>Orchids</b>			3rd Apr	4th Apr	5th Apr	6th Apr	7th Apr	8th Apr
			Day 2	Day 3	Day 4	Day 5	Day 6	Day 7
Endemic and near endemic species are noted with ☆								
38	Pink Butterfly Orchid	<i>Anacamptis papilionacea</i>		✓	✓	✓	✓	
39	An Orchid	<i>Anacamptis picta</i>			✓			
40	Pyramidal Orchid	<i>Anacamptis pyramidalis</i>		✓		✓		
<b>Orchis group</b>								
41	Anatolian Orchid	<i>Orchis anatolica</i>	✓		✓		✓	
42	Man Orchid	<i>Orchis anthropophora</i>			✓	✓		
43	Naked Man Orchid	<i>Orchis italica</i>			✓	✓		
44	Provençal Orchid	<i>Orchis provincialis</i>			✓			
<b>Neotinea group</b>								
45	Dense-flowered Orchid	<i>Neotinea maculata</i>	✓		✓			✓
46	Milky Orchid	<i>Neotinea lactea</i>			✓			
<b>Limodorum group</b>								
47	Violet Limodore	<i>Limodorum abortivum</i>	✓				✓	

<b>Other Plants</b>			3rd Apr	4th Apr	5th Apr	6th Apr	7th Apr	8th Apr
			Day 2	Day 3	Day 4	Day 5	Day 6	Day 7
Endemic and near endemic species are noted with ☆								
<b>Pteridiophytes</b>								
<b>Aspleniaceae</b>								
1	Jersey Fern	<i>Anogramma leptophylla</i>			✓			
2	Rusty-back Fern	<i>Asplenium ceterach</i>			✓			
3	Black Spleenwort	<i>Asplenium adiantum-nigrum</i>			✓			
<b>Sellaginellaceae</b>								
4	Mediterranean Clubmoss	<i>Sellaginella denticulate</i>			✓			
<b>Angiosperms</b>								
<b>Cupressaceae</b>								
5	Italian Cypress	<i>Cupressus sempervirens</i>	✓					
6	Large-fruited Juniper	<i>Juniperus oxycedrus</i>		✓				
<b>Pinaceae</b>								
7	Turkish Pine	<i>Pinus brutia</i>	✓		✓			
<b>Dicotyledons</b>								
<b>Anacardiaceae</b>								
8	Mastic	<i>Pistacia lentiscus</i>		✓				
<b>Apiaceae</b>								

Other Plants			3rd Apr	4th Apr	5th Apr	6th Apr	7th Apr	8th Apr
			Day 2	Day 3	Day 4	Day 5	Day 6	Day 7
Endemic and near endemic species are noted with ☆								
9	Fennel	<i>Foeniculum vulgare</i>		✓				
10	Shepherd's Needle	<i>Scandix pecten-veneris</i>						✓
<b>Aristolochiaceae</b>								
11	Rhodian Dutchman's Pipe ☆	<i>Aristolochia guichardii</i>	✓					
<b>Asteraceae</b>								
12	Chios Chamomile	<i>Anthemis chia</i>	✓					
13	Rayless Chamomile	<i>Anthemis rigida</i>						✓
14	Annual Daisy	<i>Bellis annua</i>	✓					
15	Common Daisy	<i>Bellis perennis</i>			✓			
16	Lettuce-leaved Star-thistle ☆	<i>Centaurea lactucifolia</i>		✓				
17	Yellow Crown Daisy	<i>Glebionis coronaria</i>		✓				
18	A Curry Plant	<i>Helichrysum conglobatum</i>						✓
19	Spiny Starwort	<i>Pallenis spinosa</i>		✓				
20	Spiny Sow-thistle	<i>Sonchus oleraceus</i>					✓	
21	Greek Dandelion	<i>Taraxacum hellenicum</i>					✓	
22	Southern Salsify	<i>Tragopogon porrifolius</i>	✓					
<b>Boraginaceae</b>								
23	Dyer's Alkanet	<i>Alkanna tinctoria</i>		✓				
24	Garden Anchusa	<i>Anchusa azurea</i>		✓				
25	Hybrid Alkanet	<i>Anchusa undulata</i> ssp. <i>hybrida</i>	✓					
26	Narrow-leaved Viper's Bugloss	<i>Echium angustifolium</i>		✓				
27	Purple Viper's Bugloss	<i>Echium plantagineum</i>			✓			
28	Shrubby Gromwell	<i>Lithodora hispidula</i>	✓					
29	Early Forget-me-not	<i>Myosotis ramosissima</i>						✓
<b>Brassicaceae</b>								
30	An Alyssum	<i>Alyssum sibiricum</i>				✓		
31	Spring Rockcress	<i>Arabis verna</i>	✓					
32	Buckler Mustard	<i>Biscutella didyma</i>	✓					
33	Dwarf Maresia	<i>Maresia nana</i>	✓					
34	Three-horned Stock	<i>Matthiola tricuspidata</i>				✓		
<b>Campanulaceae</b>								
35	Large Rhodian Bellflower ☆	<i>Campanula hagiela</i>						✓
36	Small Rhodian Bellflower ☆	<i>Campanula rhodensis</i>		✓				
<b>Caryophyllaceae</b>								



Other Plants			3rd Apr	4th Apr	5th Apr	6th Apr	7th Apr	8th Apr
			Day 2	Day 3	Day 4	Day 5	Day 6	Day 7
Endemic and near endemic species are noted with ☆								
37	Long-haired Pink	<i>Dianthus crinitus</i>			✓	✓		
38	Hairless Catchfly	<i>Silene behen</i>	✓					
39	Forked Catchfly	<i>Silene dichotoma</i>	✓					
40	A Champion ☆	<i>Silene salamandra</i>			✓			
41	Argentine Tea	<i>Paronychia argentea</i>				✓		
<b>Cistaceae</b>								
42	Pink Rockrose	<i>Cistus creticus</i>	✓					
43	Small-flowered Rockrose	<i>Cistus parviflorus</i>		✓				
44	Sage-leaved Rockrose	<i>Cistus salviifolius</i>	✓					
45	Arabian Rockrose	<i>Fumana arabica</i>						✓
46	White Rock-rose	<i>Helianthemum apenninum</i>					✓	
47	Willow-leaved Rock-rose	<i>Helianthemum salicifolium</i>			✓			
48	Spotted Sand-Rockrose	<i>Tuberaria guttata</i>			✓			
<b>Crassulaceae</b>								
49	Navelwort	<i>Umbilicus rupestris</i>						✓
<b>Cytinaceae</b>								
50	Yellow Cytinus	<i>Cytinus hypocistis ssp. clusii</i>		✓				
51	Red Cytinus	<i>Cytinus ruber</i>		✓				
<b>Ericaceae</b>								
52	Strawberry Tree	<i>Arbutus unedo</i>					✓	
<b>Euphorbiaceae</b>								
53	Greek Spiny Spurge	<i>Euphorbia acanthothamnus</i>	✓					
<b>Fabaceae</b>								
54	South Aegean Milkvetch	<i>Astragalus austroaegaeus</i>		✓				
55	Spruner's Milkvetch	<i>Astragalus spruneri</i>		✓				
56	Pitch Trefoil	<i>Bituminaria bituminosa</i>	✓					
57	Yellow Crownvetch	<i>Coronilla scorpioides</i>				✓		
58	Thorny Broom	<i>Genista acanthoclada</i>			✓			
59	Red Vetchling	<i>Lathyrus cicera</i>	✓					
60	Sea Medick	<i>Medicago marina</i>				✓		
61	Round-fruited Medick	<i>Medicago orbicularis</i>		✓				
62	Burr Medick	<i>Medicago polymorpha</i>		✓				
63	Spanish Restharrow	<i>Ononis hispanica</i>		✓				
64	Garden Pea	<i>Pisum fulvum</i>	✓					

Other Plants			3rd Apr	4th Apr	5th Apr	6th Apr	7th Apr	8th Apr
			Day 2	Day 3	Day 4	Day 5	Day 6	Day 7
Endemic and near endemic species are noted with ☆								
65	Edible Pea	<i>Pisum sativum</i>	✓					
66	Narrow-leaved Clover	<i>Trifolium angustifolium</i>				✓		
67	Sharp-tooth Clover	<i>Trifolium argutum</i>		✓				
68	Hop Clover	<i>Trifolium campestre</i>		✓				
69	Shield Clover	<i>Trifolium clypeatum</i>	✓					
70	Persian Clover	<i>Trifolium resupinatum</i>		✓				
71	Star Clover	<i>Trifolium stellatum</i>		✓				
72	Woolly Clover	<i>Trifolium tomentosum</i>		✓				
73	One-flower Clover	<i>Trifolium uniflorum</i>					✓	
74	Large-flower Hop Clover	<i>Trifolium grandiflorum</i>		✓				
75	Hairy Yellow-vetch	<i>Vicia hybrida</i>	✓					
76	Hairy Vetch	<i>Vicia villosa</i>	✓					
<b>Geraniaceae</b>								
77	Common Stork's-bill	<i>Erodium cicutarium</i>						✓
78	Long-beaked Stork's-bill	<i>Erodium gruinum</i>	✓					
79	Mallow-leaved Stork's-bill	<i>Erodium malacoides</i>						✓
<b>Lamiaceae</b>								
80	Henbit Deadnettle	<i>Lamium aplexicaule</i>	✓					
81	White Hedge-nettle	<i>Prasium majus</i>		✓				
82	Greek Sage	<i>Salvia fruticosa</i>	✓					
83	Annual Clary	<i>Salvia viridis</i>			✓			
84	Roman Hyssop	<i>Satureja thymbra</i>		✓				
85	Coastal Germander	<i>Teucrium brevifolium</i>		✓				
<b>Linaceae</b>								
86	Pale Flax	<i>Linum bienne</i>				✓		
<b>Oxalidaceae</b>								
87	Bermuda Buttercup	<i>Oxalis pes-caprae</i>				✓		
<b>Orobanchaceae</b>								
88	Hairy Broomrape	<i>Orobanche pubescens</i>		✓				
89	Branched Broomrape	<i>Orobanche ramosa</i>				✓		
<b>Paeoniaceae</b>								
90	Rhodian Peony ☆	<i>Paeonia clusii</i> ssp. <i>rhodia</i>						
<b>Papaveraceae</b>								
91	Common Poppy	<i>Papaver rhoeas</i>	✓					

Other Plants			3rd Apr	4th Apr	5th Apr	6th Apr	7th Apr	8th Apr
			Day 2	Day 3	Day 4	Day 5	Day 6	Day 7
Endemic and near endemic species are noted with ☆								
<b>Plantaginaceae</b>								
92	Glandular Plantain	<i>Plantago afra</i>		✓				
93	Cretan Plantain	<i>Plantago cretica</i>		✓				
<b>Polygalaceae</b>								
94	Mediterranean Milkwort	<i>Polygala monspeliaca</i>						✓
<b>Polygonaceae</b>								
95	Horned Dock	<i>Rumex bucephalophorus</i>	✓					
96	Cretan Dock	<i>Rumex tuberosus</i>						✓
<b>Primulaceae</b>								
97	Scarlet Pimpernel	<i>Anagallis arvensis</i>	✓					
98	Rhodes Cyclamen ☆	<i>Cyclamen rhodium</i>	✓					
<b>Ranunculaceae</b>								
99	Balkan Anemone	<i>Anemone blanda</i>	✓					
100	Crown Anemone	<i>Anemone coronaria</i>	✓					
101	Turban Buttercup	<i>Ranunculus asiaticus</i>		✓		✓		
102	Cretan Buttercup	<i>Ranunculus creticus</i>	✓					
103	Jersey Buttercup	<i>Ranunculus paludosus</i>			✓			
<b>Resedaceae</b>								
104	Mignonette	<i>Reseda lutea</i>		✓				
<b>Rosaceae</b>								
105	Almond-leaved Pear	<i>Pyrus spinosa</i>	✓					
<b>Rubiaceae</b>								
106	Narrow-leaved Madder	<i>Rubia tenuifolia</i>						✓
<b>Scrophulariaceae</b>								
107	Mediterranean Linseed	<i>Bellardia trixago</i>				✓		
108	Red Bartsia	<i>Parentucellia latifolia</i>			✓			
109	Yellow Bartsia	<i>Parentucellia viscosa</i>			✓			
110	Feathered Mediterranean Figwort	<i>Scrophularia lucida</i>	✓					
<b>Solanaceae</b>								
111	Mandrake	<i>Mandragora officinarum</i>	✓					
<b>Valerianaceae</b>								
112	Italian Valerian	<i>Valeriana italica</i>	✓					
113	Bladder Corn Salad	<i>Valerianella vesicaria</i>						✓
<b>Monocotyledons</b>								

Other Plants			3rd Apr	4th Apr	5th Apr	6th Apr	7th Apr	8th Apr
			Day 2	Day 3	Day 4	Day 5	Day 6	Day 7
Endemic and near endemic species are noted with ☆								
<b>Amaryllidaceae</b>								
114	Naples Garlic	<i>Allium neapolitanum</i>	✓					
115	Sea Daffodil	<i>Pancratium maritimum</i>				✓		
<b>Araceae</b>								
116	Friar's Cowl	<i>Arisarum vulgare</i>	✓					
<b>Asparagaceae</b>								
117	Purple Roman Squill	<i>Bellevalia trifoliata</i>	✓					
118	Grape Hyacinth	<i>Muscari neglectum</i>	✓					
119	Tassel Hyacinth	<i>Muscari comosum</i>	✓					
120	Weiss' Grape Hyacinth	<i>Muscari weissii</i>		✓				
121	Drooping Star-of-Bethlehem	<i>Ornithogalum nutans</i>	✓					
122	Hyacinth Squill	<i>Scilla hyacinthoides</i>			✓			
<b>Iridaceae</b>								
123	Anatolian Gladiolus	<i>Gladiolus anatolicus</i>						✓
124	Field Gladiolus	<i>Gladiolus italicus</i>		✓				
125	Barbary Nut	<i>Moraea sisyrinchium</i>	✓					
<b>Liliaceae</b>								
126	Greek Gagea	<i>Gagea graeca</i>			✓			
127	Rhodian Fritillary ☆	<i>Fritillaria rhodia</i>			✓		✓	
<b>Poaceae</b>								
128	Giant Reed	<i>Arundo donax</i> ssp. <i>donax</i>	✓					
129	Bunny Tails	<i>Lagurus ovatus</i>		✓				
<b>Xanthorrhoeaceae</b>								
130	Small-fruited Asphodel	<i>Asphodelus aestivus</i>	✓					
131	Hollow-stemmed Asphodel	<i>Asphodelus fistulosus</i>		✓				

Birds			3rd Apr	4th Apr	5th Apr	6th Apr	7th Apr	8th Apr
			Day 2	Day 3	Day 4	Day 5	Day 6	Day 7
Sightings are marked with a ✓, those heard only are marked with 🎵								
1	Cormorant	<i>Phalacrocorax carbo</i>					✓	
2	Common Buzzard	<i>Buteo buteo</i>		✓	✓	✓		✓
3	Sparrowhawk	<i>Accipiter nisus</i>						✓
4	Kestrel	<i>Falco tinnunculus</i>		✓		✓		
5	Chukar	<i>Alectoris chukar</i>						✓

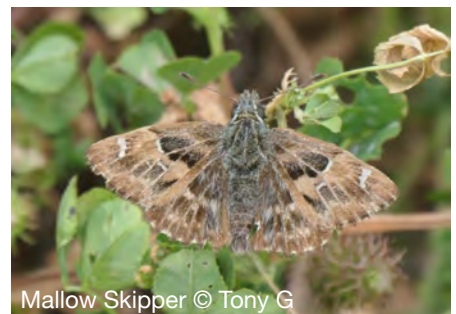
Birds			3rd Apr	4th Apr	5th Apr	6th Apr	7th Apr	8th Apr
			Day 2	Day 3	Day 4	Day 5	Day 6	Day 7
6	Yellow-legged Gull	<i>Larus michahellis</i>						✓
7	Great Crested Grebe	<i>Podiceps cristatus</i>						
8	Collared Dove	<i>Streptopelia decaocto</i>	✓	✓	✓	✓		✓
9	Swift	<i>Apus apus</i>				✓	✓	✓
10	Alpine Swift	<i>Apus melba</i>		✓		✓		✓
11	Great Spotted Cuckoo	<i>Clamator glandarius</i>			♪♪			
12	Hoopoe	<i>Upupa epops</i>					✓	
13	Scops Owl	<i>Otus scops</i>					♪♪	
14	Wryneck	<i>Jynx torquilla</i>	✓				✓	
15	Woodlark	<i>Lullula arborea</i>				✓		
16	Crested Lark	<i>Galerida cristata</i>		✓	✓	✓	✓	
17	House Martin	<i>Delichon urbica</i>	✓					✓
18	Crag Martin	<i>Ptyonoprogne rupestris</i>		✓				✓
19	Swallow	<i>Hirundo rustica</i>	✓	✓	✓	✓	✓	✓
20	Red-rumped Swallow	<i>Cecropis daurica</i>		✓				✓
21	White Wagtail	<i>Motacilla alba</i>			✓			
22	Woodchat Shrike	<i>Lanius senator</i>				✓	✓	
23	Stonechat	<i>Saxicola rubicola</i>						✓
24	Northern Wheatear	<i>Oenanthe oenanthe</i>				✓	✓	
25	Black-eared Wheatear	<i>Oenanthe melanoleuca</i>				✓		
26	Sardinian Warbler	<i>Sylvia melanocephala</i>	✓	✓			✓	
27	Blue Tit	<i>Cyanistes caeruleus</i>	✓					
28	Jay	<i>Garrulus glandarius glaszneri</i>	✓	✓		✓		✓
29	Hooded Crow	<i>Corvus cornix</i>		✓	✓			✓
30	Raven	<i>Corvus corax</i>		✓				✓
31	House Sparrow	<i>Passer domesticus</i>	✓	✓	✓	✓	✓	
32	Chaffinch	<i>Fringilla coelebs</i>	✓	✓			✓	✓
33	Greenfinch	<i>Chloris chloris</i>						✓
34	Goldfinch	<i>Carduelis carduelis</i>						✓
35	Corn Bunting	<i>Emberiza calandra</i>		✓		✓		

<b>Butterflies</b>			3rd Apr	4th Apr	5th Apr	6th Apr	7th Apr	8th Apr
			Day 2	Day 3	Day 4	Day 5	Day 6	Day 7
Imago sightings are marked with a ✓, caterpillars are marked with a ☆								
<b>Family Papilionidae</b>								
1	Scarce Swallowtail	<i>Iphiclides podalirius</i>	✓		✓	✓		
2	Common Swallowtail	<i>Papilio machaon</i>		✓	✓	✓		
3	Eastern Festoon	<i>Zerynthia cerisyi</i>	✓			✓		
<b>Family Pieridae</b>								
4	Clouded Yellow	<i>Colias croceus</i>	✓	✓	✓	✓	✓	
	Eastern Dappled White	<i>Euchre ausonia</i>			✓	✓		
5	Cleopatra	<i>Gonepteryx cleopatra</i>				✓		
6	Large White	<i>Pieris brassicae</i>	✓		✓	✓		✓
7	Small White	<i>Pieris rapae</i>						✓
<b>Family Lycaenidae</b>								
	Green Hairstreak	<i>Callophrys rubi</i>	✓	✓	✓	✓		
9	Small Copper	<i>Lycaena phlaeas</i>			✓			
11	Green-underside Blue	<i>Glaucopsyche alexis</i>	✓		✓	✓		✓
10	Long-tailed Blue	<i>Lampides boeticus</i>						✓
13	Common Blue	<i>Polyommatus icarus</i>		✓		✓		
12	Eastern Baton Blue	<i>Pseudophilotes vicrama</i>		✓	✓			
<b>Family Nymphalidae</b>								
14	Red Admiral	<i>Vanessa atalanta</i>	✓					
15	Painted Lady	<i>Vanessa cardui</i>	✓		✓	✓		✓
16	Turkish Meadow Brown	<i>Maniola telmessia</i>				✓		
<b>Family Hesperidae</b>								
18	Mallow Skipper	<i>Carcharodus alceae</i>		✓		✓		
17	Pygmy Skipper	<i>Gegenes pumilio</i>			✓			

<b>Other notable Fauna</b>			3rd Apr	4th Apr	5th Apr	6th Apr	7th Apr	8th Apr
			Day 2	Day 3	Day 4	Day 5	Day 6	Day 7
Sightings are marked with a ✓								
1	Egyptian Grasshopper	<i>Anacridium aegyptiacum</i>		✓				
2	Hebe Tiger Moth	<i>Arctia festiva</i>			✓			
3	Fallow Deer	<i>Dama dama</i>		✓	✓			✓
4	Mediterranean House Gecko	<i>Hemidactylus turcicus</i>		✓				
5	Balkan Green Lizard	<i>Lacerta trilineata</i>	✓					
6	Hummingbird Hawkmoth	<i>Macroglossum stellatarum</i>	✓					

Other notable Fauna			3rd Apr	4th Apr	5th Apr	6th Apr	7th Apr	8th Apr
			Day 2	Day 3	Day 4	Day 5	Day 6	Day 7
Sightings are marked with a ✓								
7	A Bee	<i>Malecta obscura</i>			✓			
8	Levant Green Frog	<i>Pelophylax bedrigae</i>			✓			
9	A Grasshopper	<i>Pyrgomorpha conica</i>		✓				
10	Starred Agama	<i>Stellagama stellio</i>	✓					

## Photo Gallery



Ophrys ferrum-equinum © Yiannis Christofides



Ophrys colossaea © Yiannis Christofides

Limodorum abortivum © Tony G



© Jeremy N



© Tony G



Fritillaria rhodia © Jeremy N



Ophrys blitopertha © Yiannis Christofides



Orchis anatolica © Bob M



Ophrys oestrifera ssp. cornutula © Bob M



© Bob M



© Tony G





© Jeremy N



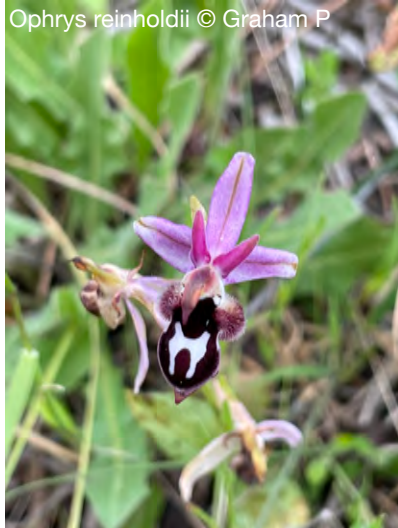
Ophrys regis-ferdinandii  
© Yiannis Christofides



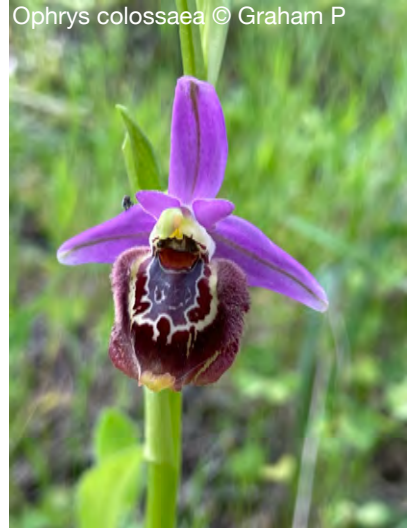
Silene salamandra  
© Yiannis Christofides



Ophrys rhodia © Yiannis Christofides



Ophrys reinholdii © Graham P



Ophrys colossaea © Graham P



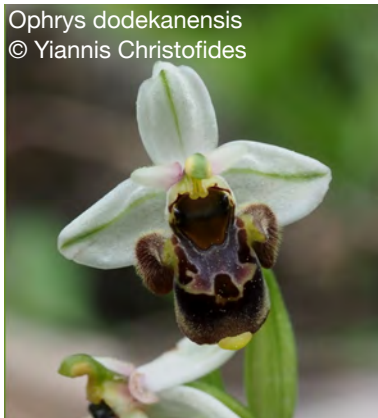
Ophrys heldreichii ssp. polyxo  
© Graham P



Ophrys reinholdii © Graham P



Ophrys dodekanensis © Jeremy N



Ophrys dodekanensis  
© Yiannis Christofides



Eastern Festoon © Jeremy N